

# THE EARL BAILLY ART COLLECTION CATALOGUE

WORKS BY LUNENBURG'S RENOWNED  
20TH CENTURY MARINE ARTIST  
OWNED AND CURATED BY:



## **LUNENBURG ART GALLERY SOCIETY**

194B LINCOLN STREET  
LUNENBURG NS B0J 2C0

**&**

## **TOWN OF LUNENBURG**

119 CUMBERLAND STREET  
P.O. BOX 129  
LUNENBURG, NS B0J 2C0

COMPILED 2023

## I: INTRODUCTION:

Greetings, friend! Thank you for looking into the *Earl Bailly Art Collection Catalogue*.

The undersigned have located, identified, listed, and verified the works in this Catalogue to the best of our ability. We appreciate the LAGS members and Town of Lunenburg staff who helped to record and preserve these important works over the previous fifty years, especially Damara Mossman of LAGS and formerly of the Fisheries Museum, whose comprehensive 2019 listing gave us an excellent start.

Fifty of the artworks in this Collection were donated *jointly* to the Lunenburg Art Gallery Society and the Town of Lunenburg by Hazen Meldrum [#1-50].

The balance were donated *solely* to the Lunenburg Art Gallery by various donors, the majority by Boyd Lee Spahr III [#62-90].

**See more about these gifts and Earl Bailly at  
[www.lunenburgartgallery.com/earl-bailly](http://www.lunenburgartgallery.com/earl-bailly)**

Please note that neither the Lunenburg Art Gallery Society nor the Town of Lunenburg have expressed interest in acquiring more Bailly paintings, nor is this Catalogue produced in order to attract offers to purchase. Our mandate is to preserve the Collection, and show the world the remarkable artist and person Earl Bailly was.

We ask you to take good care of this Catalogue and the historic artworks it represents. We hope you will find it helpful in studying and exhibiting these priceless works. Perhaps art historians will use it to study and understand the life and work of Earl Bailly. Many resources are needed. Contact [EarlBailly@lunenburgartsociety.ca](mailto:EarlBailly@lunenburgartsociety.ca) to discuss.

Best regards,

James Gray and Jan Hull  
Lunenburg Art Gallery Society  
Autumn 2023

# EARL BAILLY ART COLLECTION CATALOGUE

## TABLE OF CONTENTS

I: INTRODUCTION

II: EARL BAILLY BROCHURES

III: MASTER LIST OF ARTWORKS #1-90 + additions INCLUDING LOCATIONS

IV: ARTWORK RELOCATION FORM [internal / between TOL & LAGS]

V: ARTWORK EXHIBIT AGREEMENT [with external organizations]

VI: CATALOGUE PHOTOS #1-50:

**HAZEN MELDRUM COLLECTION jointly owned by TOL & LAGS**

VII: CATALOGUE PHOTOS #51-90 w/additions:

**BOYD LEE SPAHR III COLLECTION and other gifts owned by LAGS**

# MASTER LIST of EARL BAILLY COLLECTION PAINTINGS & PRINTS

.OCTOBER 2023

	TITLE	MEDIUM	DIMENSIONS	LOCATION	
	HAZEN MELDRUM COLLECTION (50 pcs)			LBURG TOWN HALL Offices, hallways, etc	LBURG ART GALLERY Storage & Kiosk
	<b>DONATED JOINTLY TO LUNENBURG ART GALLERY SOCIETY &amp; TOWN OF LUNENBURG</b>				
1	1. BERMUDA FITTED DINGHY	OIL/CANVAS	59.8 X 74.5 CM	MAYOR	
2	2. COD FISHING, LUNENBURG NS	OIL/CANVAS	62.0 X 75.3 CM	MAYOR	
3	3. GIBB'S HILL LIGHTHOUSE, BERMUDA	OIL/CANVAS	60.0 X 75.5 CM	CAO	
4	4. AFTER THE DORY RACE, LUNENBURG NS	OIL/BOARD	44.5 X 59.5 CM		X
5	5. AS THE STORM STRIKES	OIL/BOARD	44.0 X 59.3 CM	MAYOR	
6	6. PRINCESS HOTEL COTTAGES, HAMILTON BERMUDA	OIL/CANVAS	74.5 X 100.0CM	CAO	
7	7. WAVE	OIL/CANVAS	44.5 X 60.0 CM		X
8	8. OXEN AT REST	OIL/CANVAS	49.5 X 59.7 CM		X
9	9. BLUENOSE	OIL/CANVAS	79.5 X 62.2 CM		X
10	10. IMAGINATIVE COMPOSITION- 'GO IN PEACE'	OIL/CANVAS	60.0 X 75.0 CM	PLANNING 3rd fl	
11	11. FISHERMAN	OIL/BOARD	59.8 X 44.5 CM		X
12	12. SUNSET GLOW, BLANDFORD NS	OIL/BOARD	39.7 X 49.9 CM	BARRISTER	
13	13. THE LIGHTHOUSE, PEGGY'S COVE NS	OIL/BOARD	39.3 X 49.5 CM	INFO OFC Main fl	
14	14. LUNENBURG HARBOUR	OIL/BOARD	49.5 X 39.5 CM	BUSINESS CENTRE	
15	15. SHIP AT BLUEROCKS, SOUTH SHORE NS	OIL/BOARD	39.3 X 49.5 CM	COUNCIL	
16	16. WINTER, LUNENBURG COUNTY NS	OIL/BOARD	44.5 X 59.8 CM	CAO	
17	17. SHIPBUILDING, LUNENBURG NS	OIL/BOARD	44.3 X 59.5 CM		X
18	18. OLD ROCKS, PEGGY'S COVE NS	OIL/BOARD	49.5 X 59.7 CM	COUNCIL	
19	19. FISHERMAN'S HAVEN	OIL/CANVAS	49.1 X 59.7 CM		X
20	20. SUNSET, LUNENBURG NS	OIL/BOARD	44.2 X 59.5 CM	COUNCIL	
21	21. COD FLEET RETURNING FROM FISHING BANKS	OIL/BOARD	49.7 X 39.5 CM	COUNCIL	
22	22. BAILLY'S BEACH, BERMUDA	OIL/BOARD	39.2 X 49.4 CM	CAO	
23	23. OLD STUMP	OIL/BOARD	44.5 X 59.5 CM	FLEX OFC 2nd fl	
24	24. MARINE LIFE	OIL/BOARD	44.3 X 59.5 CM	FLEX OFC 2nd fl	
25	25. BROAD COVE, NS	OIL/BOARD	44.3 X 59.6 CM	FAMILY CT 2nd fl	
26	26. COVE NEAR BLUE ROCKS, NS	OIL/CANVAS	49.2 X 59.6 CM		X
27	27. BUTTERFLIES AND BUOYS	OIL/MASONITE	44.3 X 59.5 CM	FAMILY CT 2nd fl	
28	28. OLD TREES AND ROCKS, SUMMERVILLE BEACH NS	OIL/CANVAS	60.0 X 75.0 CM	INFO OFC Main fl	
29	29. BERMUDA HOUSE	OIL/MASONITE	39.4 X 49.6 CM	INFO OFC Main fl	
30	30. THE OVENS, LUNENBURG COUNTY NS	OIL/BOARD	39.7 X 50.0 CM		X
31	31. JOHN SMITH'S BAY, BERMUDA	OIL/BOARD	39.5 X 49.5 CM		X
32	32. BERMUDA STREET	OIL/BOARD	39.4 X 49.0 CM	FAMILY CT 2nd fl	
33	33. BERMUDA CAVES	OIL/BOARD	39.7 X 49.9 CM	FLEX OFC 2nd fl	
34	34. BERMUDA LONGTAILS	OIL/MASONITE	39.7 X 49.8 CM	FLEX OFC 2nd fl	
35	35. OVENS BEACH, NS	OIL/BOARD	39.8 X 49.7 CM	INFO OFC Main fl	
36	36. GASPÉ COAST	OIL/MASONITE	49.5 X 59.4 CM	CAO	
37	37. STORM AT SEA	OIL/CANVAS	44.7 X 60.0 CM		X
38	38. SPRINGTIME, LUNENBURG NS	OIL/BOARD	95.3 X 44.0 CM	COUNCIL	
39	39. SURF	OIL/CANVAS	49.5 X 62.4 CM	BUSINESS CENTRE	
40	40. DINGY WITH SAIL	OIL/BOARD	39.7 X 49.7 CM	FAMILY CT 2nd fl	
41	41. DIPPING GASPÉREAU AT COOK'S FALLS, NS	OIL/MASONITE	49.0 X 74.8 CM		X
42	42. LADY AND BULL	OIL/CANVAS	59.5 X 74.7 CM	PLANNING 3rd fl	
43	43. ON THE SOUTH SHORE, NS	OIL/BOARD	39.0 X 49.2 CM	INFO OFC Main fl	
44	44. THE OLD LONG SHED	OIL/BOARD	39.5 X 49.5 CM	PLANNING 3rd fl	
45	45. TREES IN AUTUMN	OIL/CANVAS	59.6 X 74.5 CM	ASST MUN. CLERK 1st fl	
46	46. PINK FLOWERS, WATER AND TREES	OIL/CANVAS	60.0 X 74.7 CM	INFO OFC Main fl	
47	47. TWO FISHERMEN WITH CATCH	OIL/CANVAS	59.6 X 74.6 CM		X
48	48. FISH SHEDS AND GEAR	OIL/CANVAS	59.5 X 74.0 CM		X
49	49. OLD WINDJAMMER	OIL/CANVAS	63.0 X 74.6 CM		X
50	50. THE BOUNTY	OIL/BOARD	59.5 X 74.5 CM	CAO	

MISC. DONATIONS TO LUNENBURG ART GALLERY SOCIETY				LOCATION	
				LBURG TOWN HALL	LBURG ART GALLERY
51	51. EARL BAILLY- PORTRAIT (no pipe)	OIL	26.0 X 38.0 CM?	CAO	
52	52. EARL BAILLY- PORTRAIT (with pipe) Don Bailly donated to FMA; artist Helen Barry 1993	OIL		MAIN FL SHOWCASE	
53	53. WATERFRONT, NS	WATERCOLOUR	26.0 X 36.0 CM		X
54	54. GREEK HOUSE, BLUE ROCKS NS	OIL			X
55	55. SALT OF THE EARTH	OIL	40.0 X 51.0 CM		X
<b>UNDOCUMENTED DONATIONS: #56, 57, 60, 61</b>					
56	56. SMALL SAILBOAT AND RED BARN donated by Don & Audrey Armstrong	OIL	40.0 X 50.0 CM	BARRISTER 2nd fl	
57	57. BLUE ROCKS, LUNENBURG COUNTY NS donated by Mr & Mrs Franklin Hambolton	OIL	40.0 X 50.0 CM	MUN. CLRK 1st fl	
58	58. 1929 WATERCOLOUR, DEEP COVE donated by Lezlie Morgan – estate of Audrie R. Mahon	WATERCOLOUR	33.0 X 48.0 CM	MUN CLRK 1st fl	
59	59. 1920'S WATERCOLOUR, WINTER SCENE donated to LAGS by Joyce Mitchell	WATERCOLOUR	24.0 X 37.0 CM	INFO OFC Main fl	
60	60. VERTICAL WATERCOLOUR, RIVER donor unknown -" 1925"?	WATERCOLOUR	37.0 X 25.0 CM	MUN CLRK 1st fl	
61	61. EARTH BESIDE THE SEA donated by estate of Dorothy Hopgood			CAO	
<b>BOYD LEE SPAHR III COLLECTION (19 pcs) DONATED TO LUNENBURG ART GALLERY SOCIETY</b>					
62	62. WINTER	OIL/CANVAS	40.0 X 51.0 CM		X
63	63. LOBSTER TRAPS	OIL/CANVAS	16.0 X 20.0 CM		X
64	64. WATERFRONT, LUNENBURG NS	OIL/CANVAS	41.0 X 60.5 CM		X
65	65. WHARF IN LUNENBURG, NS	OIL/CANVAS	40.5 X 60.0 CM		X
66	66. BLUE ROCKS #2	OIL/CANVAS	61.0 X 76.0 CM		X
67	67. RED DORY	OIL/CANVAS	40.1 X 51.0 CM		X
68	68. SURF AT THE OVENS	OIL/CANVAS	50.1 X 60.0 CM		X
69	69. SUNLIGHT ON THE WATER	OIL/CANVAS	23.0 X 28.0 CM		X
70	70. GREY SKY	OIL/CANVAS	25.0 X 35.0 CM		X
71	71. HUNTERS IN THE WOODS	OIL/CANVAS	22.0 X 30.0 CM		X
72	72. GREEK HOUSE	OIL/CANVAS	16.0 X 31.0 CM		X
73	73. AT REST	WATERCOLOUR	16.5 X 24.0 CM		X
74	74. LIGHTHOUSE ON THE SHORE	OIL/CANVAS	15.0 X 20.5 CM		X
75	75. SCHOONER	WATERCOLOUR	40.4 X 30.2 CM		X
76	76. FISH SHACK	OIL/CANVAS	12.0 X 17.0 CM		X
77	77. FISH SHACK AND DORY	WATERCOLOUR	20.0 X 28.0 CM		X
78	78. COVE, FOUR FISH SHACKS	WATERCOLOUR	38.0 X 55.0 CM	FAMILY CT 2nd fl	
79	79. SAILING - Schooners	OIL/CANVAS	51.0 X 40.5 CM		X
80	80. BERMUDA SHORE	OIL/CANVAS	40.0 X 50.0 CM	BARRISTER 2nd fl	
<b>BOYD LEE SPAHR III COLLECTION - PRINTS &amp; LINOCUT (10 pcs) DONATED TO LUNENBURG ART GALLERY SOCIETY</b>					
81	81. FISHERMAN ON WHARF	COLOUR PRINT		PLANNING 3rd fl	
82	82. SAILBOATS IN WINTER	COLOUR PRINT		PLANNING 3rd fl	
83	83. BERMUDA SHORE	COLOUR PRINT		PLANNING 3rd fl	
84	84. BLUENOSE IN LUNENBURG HARBOUR, NS	COLOUR PRINT		PLANNING 3rd fl	
85	85. BLUE ROCKS SCENE	COLOUR PRINT		PLANNING 3rd fl	
86	86. DORY AND FISH SHACKS	COLOUR PRINT		PLANNING 3rd fl	
87	87. SMALL FLEET	BLACK & WHITE INK PRINT	20 X 25 CM		X
88	88. BLUENOSE	ORIGINAL B&W LINOCUT		PLANNING 3rd fl	
89	89. LUNENBURG HARBOUR, NS	HALF-TONE PRINT		PLANNING 3rd fl	
90	90. PEGGY'S COVE, NS [NOTE: 89 and 90 are framed together]	HALF-TONE PRINT		PLANNING 3rd fl	
[Source & recipient unknown:]					
A1	A1: SANTA CARRIED BY BOAT [dory]			CAO	
A2	A2: number not currently assigned				
A3	A3: SAILING - SLOOP			Hallway, 2nd fl.	



V: EARL BAILLY COLLECTION -

**EXTERNAL EXHIBIT REQUEST**

The Lunenburg Art Gallery Society has either sole or joint ownership of *all* artworks in this Collection. Organizations or individuals interested in borrowing works from the premises of either the TOWN or LAGS for an exhibition or other purpose must make a formal application to the Earl Bailly Collection Committee. Please include as much information as possible, and allow a minimum of three months for a decision.

**NAME OF REQUESTING PERSON, OR ORGANIZATION AND SIGNING OFFICER:**

---

**PURPOSE FOR BORROWING EARL BAILLY ART WORKS:**

---

**HAVE/WILL YOU APPLY FOR FUNDING FOR THIS EVENT? IF SO, WHERE?** We don't want to overlap. Is your event contingent on receiving grants or donations?

---

**DATE AND DURATION OF EVENT** (please describe fully, including whether there will be security at the venue, whether admission will be charged, whether other activities will take place at the same time, etc.)

---

**LIST OUR CATALOGUE NUMBER AND NAME OF EACH DESIRED PIECE:** use extra paper if necessary.

---

**BORROWER MUST PROVIDE A CERTIFICATE OF INSURANCE FROM OUR INSURER** COVERING ARTWORK LISTED ABOVE FROM THE TIME IT LEAVES OUR PREMISES UNTIL THE TIME IT IS RETURNED. **PLEASE INITIAL** INDICATING THAT YOU ARE AWARE OF THIS REQUIREMENT. [ ]

---

SUBMIT TO EARL BAILLY COLLECTION COMMITTEE *c/o* LUNENBURG ART GALLERY, 194b LINCOLN ST, LUNENBURG, NS B0J 2E0  
MAKE EXTRA COPIES AS REQUIRED.

## **A NOTE ABOUT PHOTO QUALITY**

**The photographs in this Catalogue  
are presented for identification only.  
They are not intended to be archival quality;  
the appearance of the art works may vary  
especially in colour.**



<b>INDEX OF E BAILLY WORKS #1-50</b>			
<b>DONATED JOINTLY TO LUNENBURG ART GALLERY SOCIETY &amp; TOWN OF LUNENBURG</b>			
	<b>TITLE</b>	<b>MEDIUM</b>	<b>DIMENSIONS</b>
<b>HAZEN MELDRUM COLLECTION (50 pcs)</b>			
<b>1</b>	1. BERMUDA FITTED DINGHY	OIL/CANVAS	59.8 X 74.5 CM
<b>2</b>	2. COD FISHING, LUNENBURG NS	OIL/CANVAS	62.0 X 75.3 CM
<b>3</b>	3. GIBB'S HILL LIGHTHOUSE, BERMUDA	OIL/CANVAS	60.0 X 75.5 CM
<b>4</b>	4. AFTER THE DORY RACE, LUNENBURG NS	OIL/BOARD	44.5 X 59.5 CM
<b>5</b>	5. AS THE STORM STRIKES	OIL/BOARD	44.0 X 59.3 CM
<b>6</b>	6. PRINCESS HOTEL COTTAGES, HAMILTON BERMUDA	OIL/CANVAS	74.5 X 100.0CM
<b>7</b>	7. WAVE	OIL/CANVAS	44.5 X 60.0 CM
<b>8</b>	8. OXEN AT REST	OIL/CANVAS	49.5 X 59.7 CM
<b>9</b>	9. BLUENOSE	OIL/CANVAS	79.5 X 62.2 CM
<b>10</b>	10. IMAGINATIVE COMPOSITION- 'GO IN PEACE'	OIL/CANVAS	60.0 X 75.0 CM
<b>11</b>	11. FISHERMAN	OIL/BOARD	59.8 X 44.5 CM
<b>12</b>	12. SUNSET GLOW, BLANDFORD NS	OIL/BOARD	39.7 X 49.9 CM
<b>13</b>	13. THE LIGHTHOUSE, PEGGY'S COVE NS	OIL/BOARD	39.3 X 49.5 CM
<b>14</b>	14. LUNENBURG HARBOUR	OIL/BOARD	49.5 X 39.5 CM
<b>15</b>	15. SHIP AT BLUEROCKS, SOUTH SHORE NS	OIL/BOARD	39.3 X 49.5 CM
<b>16</b>	16. WINTER, LUNENBURG COUNTY NS	OIL/BOARD	44.5 X 59.8 CM
<b>17</b>	17. SHIPBUILDING, LUNENBURG NS	OIL/BOARD	44.3 X 59.5 CM
<b>18</b>	18. OLD ROCKS, PEGGY'S COVE NS	OIL/BOARD	49.5 X 59.7 CM
<b>19</b>	19. FISHERMAN'S HAVEN	OIL/CANVAS	49.1 X 59.7 CM
<b>20</b>	20. SUNSET, LUNENBURG NS	OIL/BOARD	44.2 X 59.5 CM
<b>21</b>	21. COD FLEET RETURNING FROM FISHING BANKS	OIL/BOARD	49.7 X 39.5 CM
<b>22</b>	22. BAILLY'S BEACH, BERMUDA	OIL/BOARD	39.2 X 49.4 CM
<b>23</b>	23. OLD STUMP	OIL/BOARD	44.5 X 59.5 CM
<b>24</b>	24. MARINE LIFE	OIL/BOARD	44.3 X 59.5 CM
<b>25</b>	25. BROAD COVE, NS	OIL/BOARD	44.3 X 59.6 CM
<b>26</b>	26. COVE NEAR BLUE ROCKS, NS	OIL/CANVAS	49.2 X 59.6 CM
<b>27</b>	27. BUTTERFLIES AND BUOYS	OIL/MASONITE	44.3 X 59.5 CM
<b>28</b>	28. OLD TREES AND ROCKS,SUMMERVILLE BEACH NS	OIL/CANVAS	60.0 X 75.0 CM
<b>29</b>	29. BERMUDA HOUSE	OIL/MASONITE	39.4 X 49.6 CM
<b>30</b>	30. THE OVENS, LUNENBURG COUNTY NS	OIL/BOARD	39.7 X 50.0 CM
<b>31</b>	31. JOHN SMITH'S BAY, BERMUDA	OIL/BOARD	39.5 X 49.5 CM
<b>32</b>	32. BERMUDA STREET	OIL/BOARD	39.4 X 49.0 CM
<b>33</b>	33. BERMUDA CAVES	OIL/BOARD	39.7 X 49.9 CM
<b>34</b>	34. BERMUDA LONGTAILS	OIL/MASONITE	39.7 X 49.8 CM
<b>35</b>	35. OVENS BEACH, NS	OIL/BOARD	39.8 X 49.7 CM
<b>36</b>	36. GASPÉ COAST	OIL/MASONITE	49.5 X 59.4 CM
<b>37</b>	37. STORM AT SEA	OIL/CANVAS	44.7 X 60.0 CM
<b>38</b>	38. SPRINGTIME, LUNENBURG NS	OIL/BOARD	95.3 X 44.0 CM
<b>39</b>	39. SURF	OIL/CANVAS	49.5 X 62.4 CM
<b>40</b>	40. DINGY WITH SAIL	OIL/BOARD	39.7 X 49.7 CM
<b>41</b>	41. DIPPING GASPEREAU AT COOK'S FALLS, NS	OIL/MASONITE	49.0 X 74.8 CM
<b>42</b>	42. LADY AND BULL	OIL/CANVAS	59.5 X 74.7 CM
<b>43</b>	43. ON THE SOUTH SHORE, NS	OIL/BOARD	39.0 X 49.2 CM
<b>44</b>	44. THE OLD LONG SHED	OIL/BOARD	39.5 X 49.5 CM
<b>45</b>	45. TREES IN AUTUMN	OIL/CANVAS	59.6 X 74.5 CM
<b>46</b>	46. PINK FLOWERS, WATER AND TREES	OIL/CANVAS	60.0 X 74.7 CM
<b>47</b>	47. TWO FISHERMEN WITH CATCH	OIL/CANVAS	59.6 X 74.6 CM
<b>48</b>	48. FISH SHEDS AND GEAR	OIL/CANVAS	59.5 X 74.0 CM
<b>49</b>	49. OLD WINDJAMMER	OIL/CANVAS	63.0 X 74.6 CM
<b>50</b>	50. THE BOUNTY	OIL/BOARD	59.5 X 74.5 CM



1.



2.



3.



4.

After the Storm, Lenoir, NC



5.



6.



7.



8.



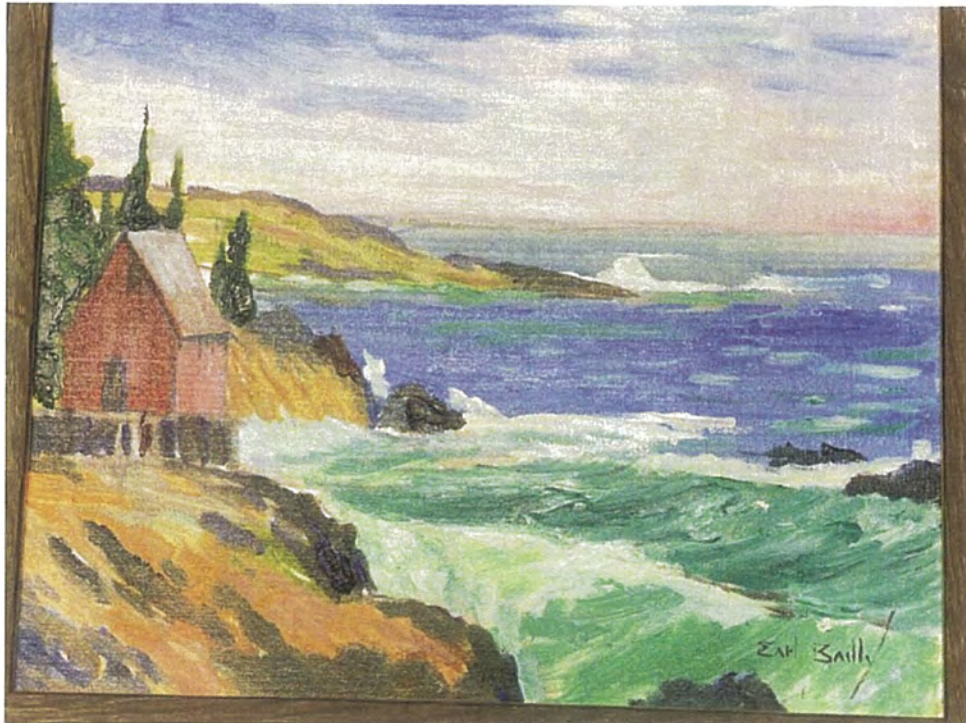
9.



10.



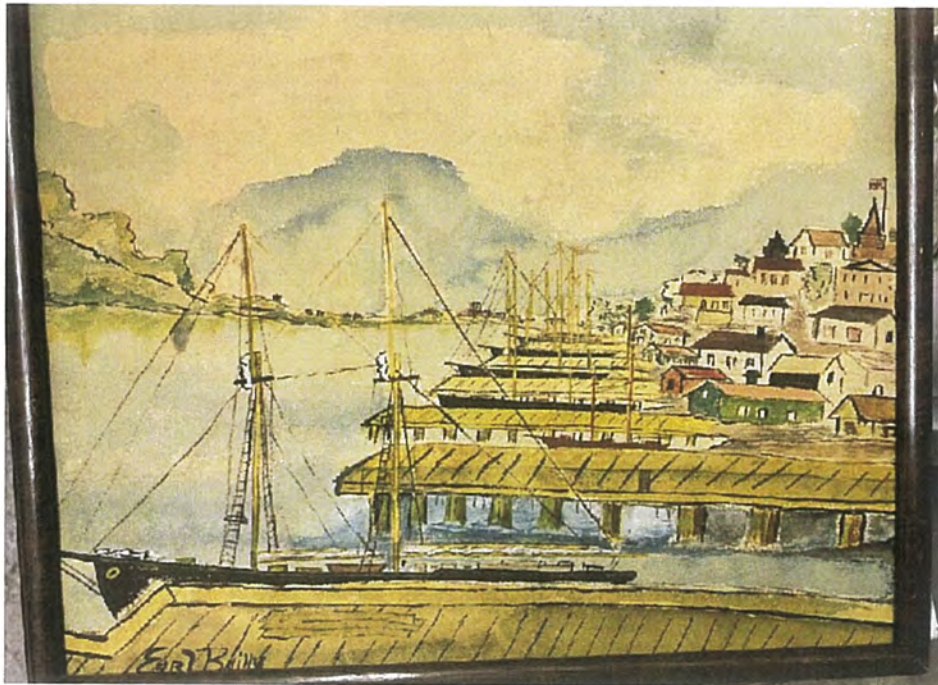
11.



12.



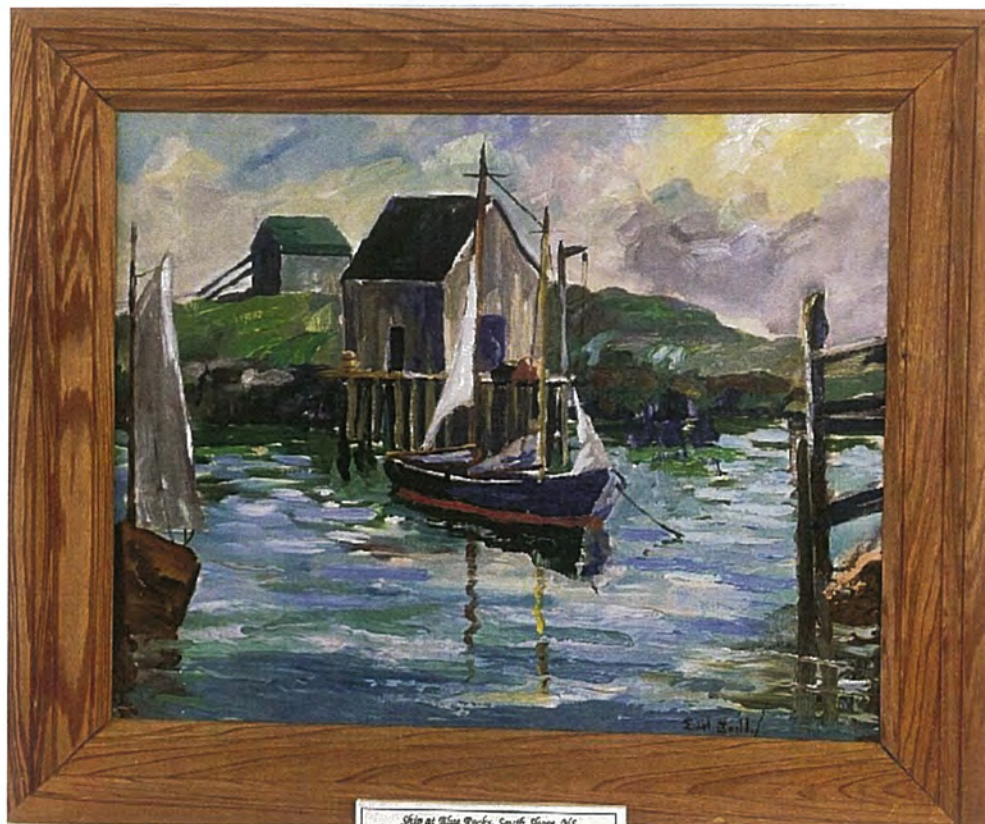
13.



14.



15.



16.



17.



18.



19.



20.



21.



22.





23.



24.



25.



26.



27.



28.

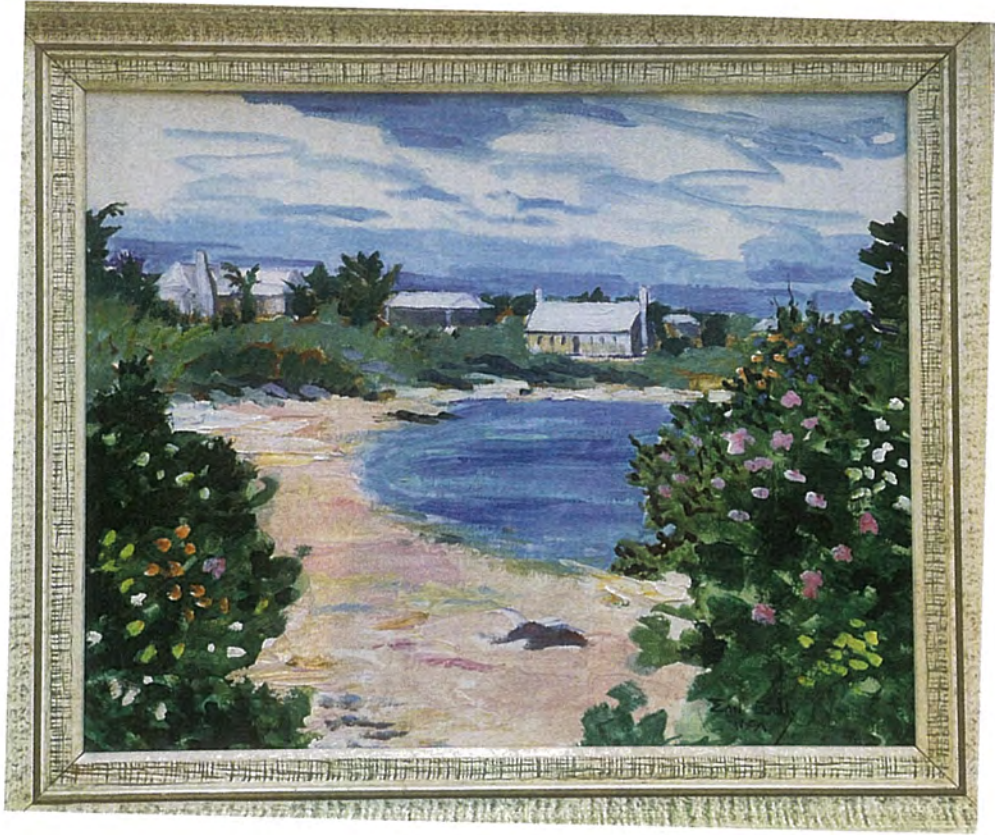


29.



30.





31.



32.

Bermuda House



33.



34.

35.



36.



37.



38.





39.



40.



41.



42.



43.



44.



45.



46.



47.



48.



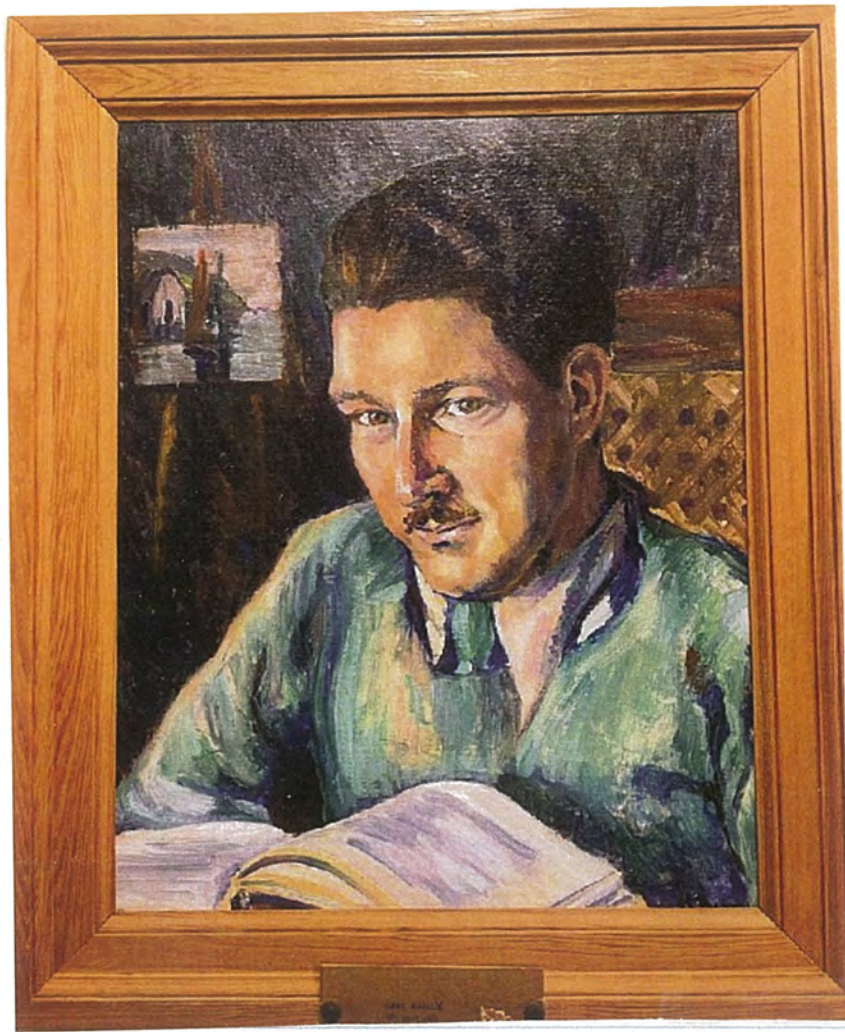


49.



50.

<b>INDEX of EARL BAILLY WORKS #51-90 + A1, A3</b>			
<b>MISC. DONATIONS TO LUNENBURG ART GALLERY SOCIETY</b>			
51	51. EARL BAILLY- PORTRAIT (no pipe)	OIL	26.0 X 38.0 CM?
52	52. EARL BAILLY- PORTRAIT (with pipe) Don Bailly donated to FMA; artist Helen Barry 1993	OIL	
53	53. WATERFRONT, NS	WATERCOLOUR	26.0 X 36.0 CM
54	54. GREEK HOUSE, BLUE ROCKS NS	OIL	
55	55. SALT OF THE EARTH	OIL	40.0 X 51.0 CM
<b>UNDOCUMENTED DONATIONS: #56, 57, 60, 61</b>			
56	56. SMALL SAILBOAT AND RED BARN donated by Don & Audrey Armstrong	OIL	40.0 X 50.0 CM
57	57. BLUE ROCKS, LUNENBURG COUNTY NS donated by Mr & Mrs Franklin Hamblton	OIL	40.0 X 50.0 CM
58	58. 1929 WATERCOLOUR, DEEP COVE donated by Lezlie Morgan – estate of Audrie R. Mahon	WATERCOLOUR	33.0 X 48.0 CM
59	59. 1920'S WATERCOLOUR, WINTER SCENE donated to LAGS by Joyce Mitchell	WATERCOLOUR	24.0 X 37.0 CM
60	60. VERTICAL WATERCOLOUR, RIVER donor unknown -" 1925"?	WATERCOLOUR	37.0 X 25.0 CM
61	61. EARTH BESIDE THE SEA donated by estate of Dorothy Hopgood		
<b>BOYD LEE SPAHR III COLLECTION (19 pcs) DONATED TO LUNENBURG ART GALLERY SOCIETY</b>			
62	62. WINTER	OIL/CANVAS	40.0 X 51.0 CM
63	63. LOBSTER TRAPS	OIL/CANVAS	16.0 X 20.0 CM
64	64. WATERFRONT, LUNENBURG NS	OIL/CANVAS	41.0 X 60.5 CM
65	65. WHARF IN LUNENBURG, NS	OIL/CANVAS	40.5 X 60.0 CM
66	66. BLUE ROCKS #2	OIL/CANVAS	61.0 X 76.0 CM
67	67. RED DORY	OIL/CANVAS	40.1 X 51.0 CM
68	68. SURF AT THE OVENS	OIL/CANVAS	50.1 X 60.0 CM
69	69. SUNLIGHT ON THE WATER	OIL/CANVAS	23.0 X 28.0 CM
70	70. GREY SKY	OIL/CANVAS	25.0 X 35.0 CM
71	71. HUNTERS IN THE WOODS	OIL/CANVAS	22.0 X 30.0 CM
72	72. GREEK HOUSE	OIL/CANVAS	16.0 X 31.0 CM
73	73. AT REST	WATERCOLOUR	16.5 X 24.0 CM
74	74. LIGHTHOUSE ON THE SHORE	OIL/CANVAS	15.0 X 20.5 CM
75	75. SCHOONER	WATERCOLOUR	40.4 X 30.2 CM
76	76. FISH SHACK	OIL/CANVAS	12.0 X 17.0 CM
77	77. FISH SHACK AND DORY	WATERCOLOUR	20.0 X 28.0 CM
78	78. COVE, FOUR FISH SHACKS	WATERCOLOUR	38.0 X 55.0 CM
79	79. SAILING - Schooners	OIL/CANVAS	51.0 X 40.5 CM
80	80. BERMUDA SHORE	OIL/CANVAS	40.0 X 50.0 CM
<b>BOYD LEE SPAHR III COLLECTION - PRINTS &amp; LINOCUT (10 pcs) DONATED TO LUNENBURG ART GALLERY SOCIETY</b>			
81	81. FISHERMAN ON WHARF	COLOUR PRINT	
82	82. SAILBOATS IN WINTER	COLOUR PRINT	
83	83. BERMUDA SHORE	COLOUR PRINT	
84	84. BLUENOSE IN LUNENBURG HARBOUR, NS	COLOUR PRINT	
85	85. BLUE ROCKS SCENE	COLOUR PRINT	
86	86. DORY AND FISH SHACKS	COLOUR PRINT	
87	87. SMALL FLEET	BLACK & WHITE INK PRINT	20 X 25 CM
88	88. BLUENOSE	ORIGINAL B&W LINOCUT	
89	89. LUNENBURG HARBOUR, NS	HALF-TONE PRINT	
90	90. PEGGY'S COVE, NS	HALF-TONE PRINT	
[NOTE: 89 and 90 are framed together]			
[Source & recipient unknown:]			
A1	A1: SANTA CARRIED BY BOAT [dory]		
A2	A2: number not currently assigned		
A3	A3: SAILING - SLOOP		



51.



52.

53.

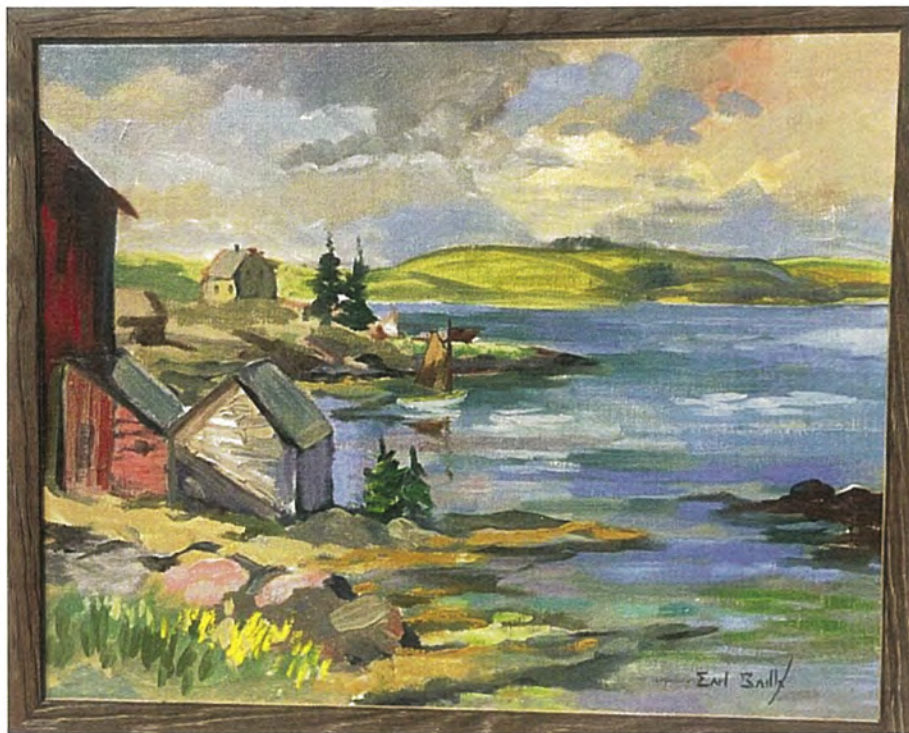


54.





55.



56.



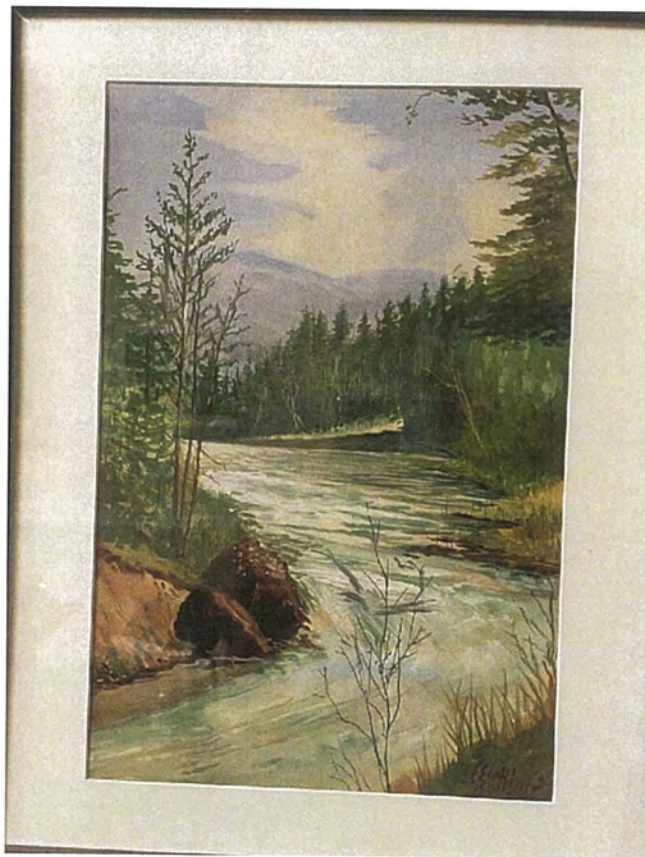
57.



58.



59.



60.





61.



62.



63.



64.



65.



66.



67.



68.

69.



70.





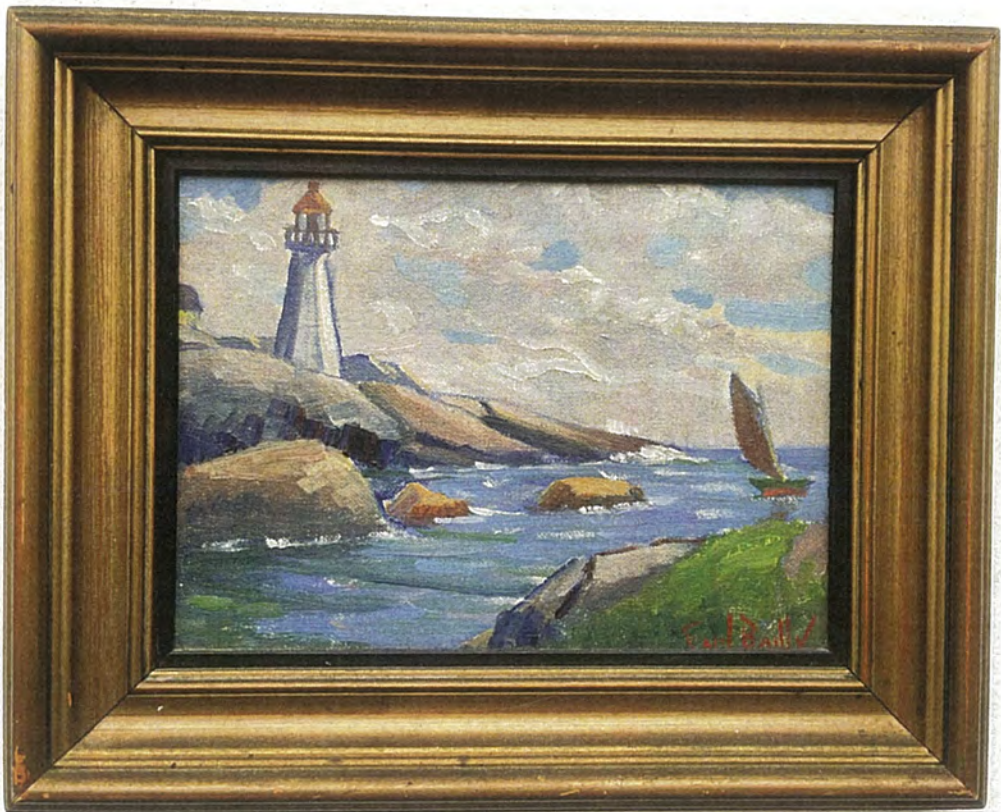
71.



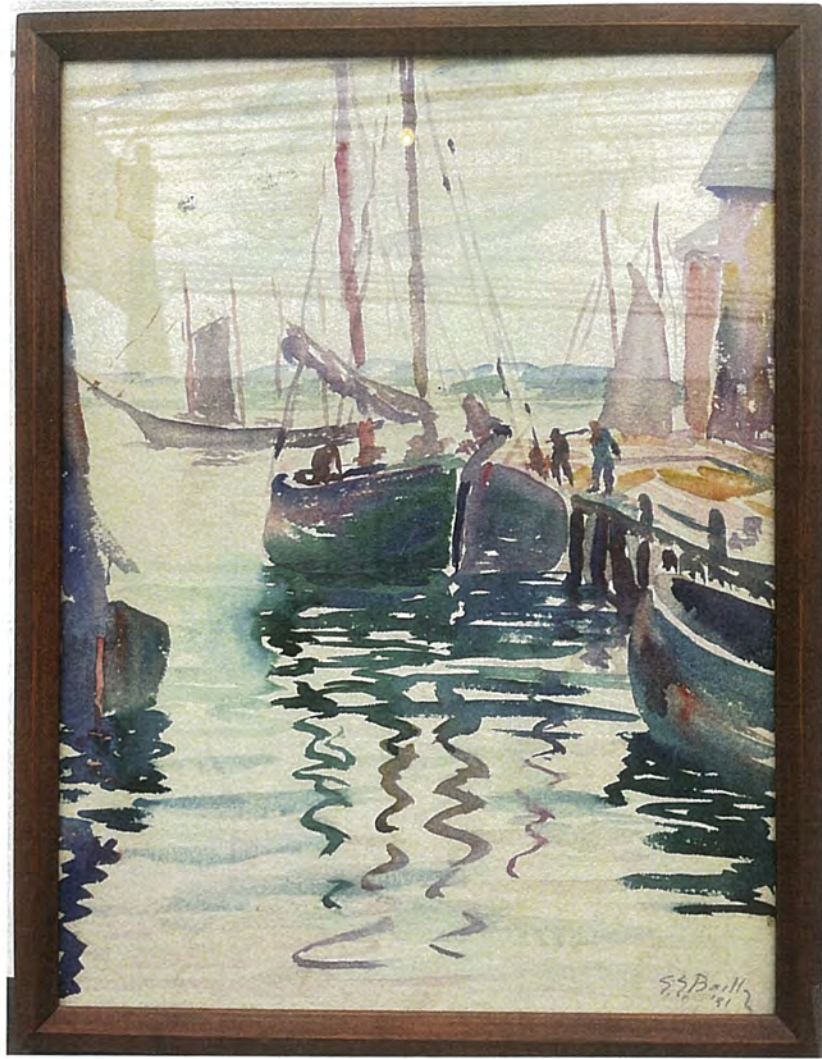
72.



73.



74.



75.

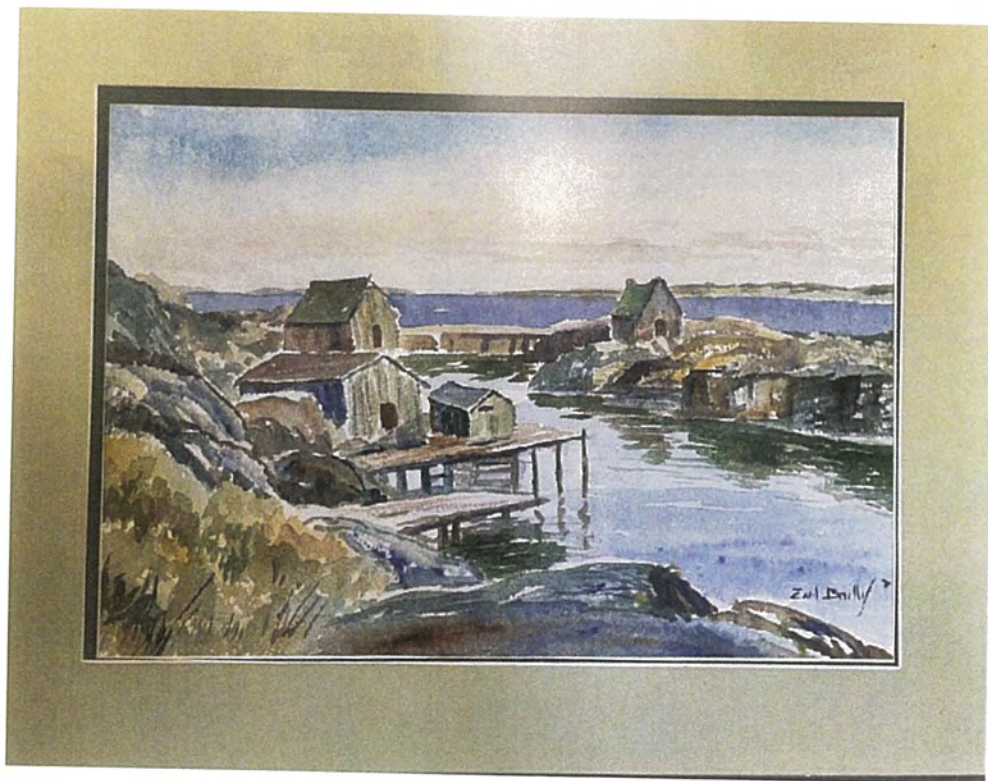


76.





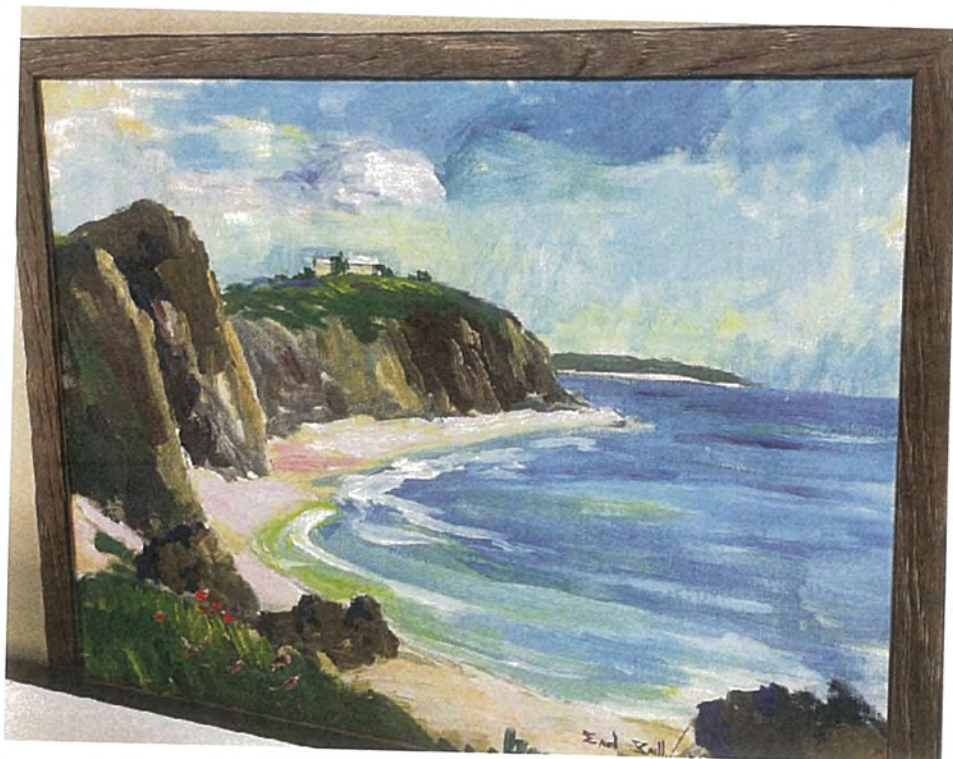
77.



78.



79.



80.



81.



82.



83.



84.



85.



86.



87.



88.

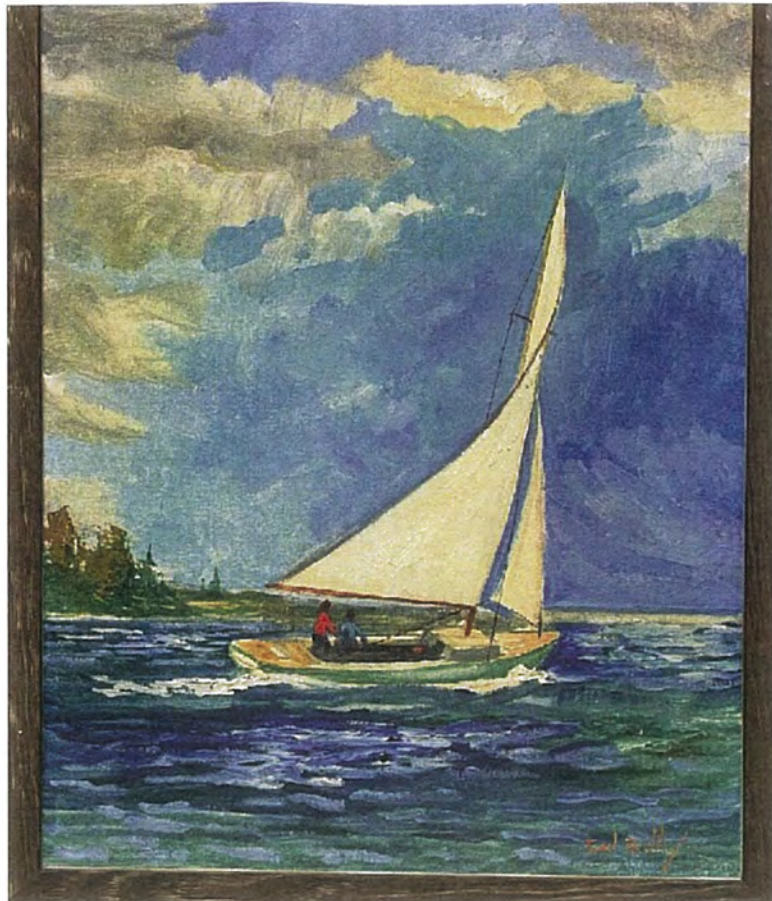


89.

90.



A1.



A3.

(NO A2)