



NewSketches



SUMMER 2011 EDITION

PAINT SEA ON SITE- July 23/24

Our biggest fundraising event was a success again, thanks to the hard work of volunteers who loaned a hand when needed.

Leading up to the weekend, there was publicity in all media. The first Lunenburg Wooden Boat Reunion and Regatta was held on the same weekend, so there were even more picturesque scenes to paint, as well as more people in town. The down side was the free Sunday waterfront concert by Lennie Gallant at 4:00pm, which drew many potential buyers away, when they could have been snapping up some wonderful artwork.

Susan Beavan's Children's Art Event was enjoyed by all who participated, thanks to Susan's thorough preparations and teaching enthusiasm.

Next year, we would love to see some new faces as well as returning ones to help make this event continue to be the major art event on the Summer South Shore.

Report and photos by Garry Woodcock, Chair, PSOS



EXHIBITIONS

KATE CHURCH AND MERYDIE FJARLIE

"A CERTAIN MENTALITEA" MAY 31-JUNE 25



Kate, Susan Hanrahan, Director of Nova Scotia Designer Crafts Council, and Merydie on opening night.



Kate Church



Merydie Fjarlie

MEMBER'S GALLERY – MAY 31- JUNE 26



Rae Smith- Lunenburg in Winter-pastel



Jeremy Akerman-Halifax Waterfront -acrylic



Janet Moore- Sunflowers on a Round Table



Linda Oickle- The Barred-woodblock print



Laurelle Jamieson The Burn -pen and ink



Darryl Swain-Smoking Walter-woodcarving

SANDI KOMST-

June 28-July 24

THE EARTH, THE SEA, AND A MACKEREL SKY



Sandi with introducer, Graham (Buz) Baker

MEMBER'S SHOW AND GALLERY- July 26-Aug 26



Claude Gendron
Un Seul Regard A Suffit- acrylic



Jennifer Morrison
Six White Houses



Gillian McCulloch- Head Study- acrylic



Barbara Furhovde
Queen's County Prize Oxen-oil



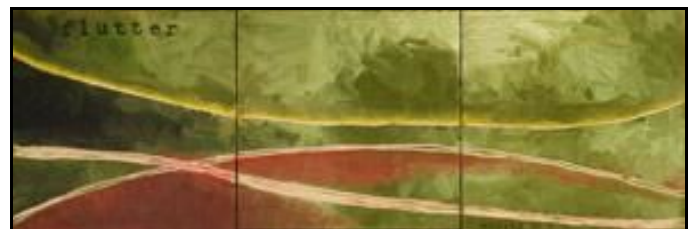
Monique Cantin
The Shop On Montague- acrylic



Laurel Haslett
Peaches- monotype



Carol Colby
Iris- pastel



Su Rogers- Roseworks-Flutter – oil

GALLERY HAPPENINGS

VISITORS: We have approximately 2,100 signatures in our guest book. Visitors enjoying the various forms of artwork have been from Germany, England, Virginia, Texas, Alberta, British Columbia, Georgia, Rhode Island, Maine Arizona, Washington, . The bulk of visitors live locally, including the Halifax / Dartmouth and Annapolis Valley.

BIO PAGE: Have you submitted a bio page for the Members Bio Binder? The page gives great information, and is a necessity to have available in the Gallery. If you provide Christine with two bios, she will ensure one is placed in the Bio Binder at the Tourist Bureau in Lunenburg when it opens in May, 2012.

FRAME HARDWARE: It is imperative that when artwork is brought to the Gallery for hanging, it must have screw eyes on either side (**no more than 2" from the top, please**) and do not install them on the inside of the back of the frame, it makes hanging difficult.

Also, please ensure that the screw eyes are not completely filled with the hanging wire that is looped through it. Space is required to slip an "S" hook through the eye for hanging, so please use a large enough eye that would leave room to do so. All paintings brought to the Gallery must be ready for hanging.

Also, just a friendly reminder ...to avoid a lost sale, please remember to sign your artwork. It has happened!

MEMBER CONTACT: Many thanks to the members of the Telephone Committee. Their telephone calls to our members who are without email ensure they are kept up-to-date with gallery information. We are most appreciative for your help.

PUBLICITY: Publicity for our exhibitions is going well and as usual, Robert Hirtle at the Progress Bulletin has been busy promoting our gallery in the local newspapers. We are grateful for his support. Other media also provide exposure for our exhibitions throughout the season.

MEMBERS' GALLERY: Please note that the Members' Gallery will have a changeover of art every month. Each member is permitted to display 1 piece of art, any medium, but no larger than 720 square inches,(framed size). Please ensure you send me your name, title, medium, size and price of the artwork you will be submitting well in advance of the submission date. Your tag will then be prepared for the wall. Here are the dates and times to bring in your work and remove any unsold work. Thank you for your co-operation. Only 1 more changeover left....where did the season go?

Sunday, September 25 - between 1-3pm

(pick up any unsold work and drop off 1 piece for the MG)

Sunday, October 30 - between 1-3pm

(please remember to pick up all remaining artwork in the gallery, because if not, it will go to the Attic Art and Collectibles Sale)

- **Christine Hurlburt, Gallery Manager / Member Contact / Publicity**
laq@eastlink.ca or 640-4044

SLIDE SHOW: For submission of work for our Slide Show that runs daily in the Members' Gallery, please contact:

- **Garry Woodcock, President**
president@lunenburgartgallery.com

WEBSITE: Doug Cooke, our Webmaster, can add your bio to our webpage. He can also add a link to your webpage, if you

have one. Only a website that promotes your artwork will be considered. For submission of work for the website, please contact Doug.

Website Trivia

There are a couple of useful documents hidden in the Lunenburg Art Gallery website. On the photo of the gallery on the home page:

- click on the red chimney to get a Committee Expense Form
- click on the window above and to the left of the Duke St door to get a gallery floor plan.

Nobody is using the News & Info page. All Board members and Committee Chairs are encouraged to enter their own news items... simply go to that page and click on [add or edit a news item](#). Login using the same username & password that works with the membership list and enter your info. You can easily go back and edit or delete an item if necessary.

Meanwhile, our site has had over 180,000 page loads since inception.

Also, on our website you will see different businesses advertised. If you click on them, **Google gives us approximately \$.10 for each 'click'**. So, visit our website often and 'click away'. Easy way for the gallery to make some much needed money!

- **Doug Cooke**
webmaster@lunenburgartgallery.com
- www.lunenburgartgallery.com

GIFT CASE GUIDELINES: Members displaying artwork in the Gift Case are permitted to have in the Gallery, at any given time, no more than:

- 1 dozen note cards
- Only 5 (original and/or prints) for rack and/or Gift Case
- The Gift Case can only accommodate artworks approximately 7" x 9" (framed size)

or smaller. Contact Carol Colby at 640-2519 carolcolby@eastlink.ca for more information.

- Artwork submitted for the Gift Case must not be priced higher than \$100.
- Payment for sales of \$20. or more will be issued at the end of the current exhibition. Sales less than \$20 will be accrued and when the amount exceeds \$20, payment will be made.

PLEASE NOTE: All notecards....single or packs, prints and unframed original work that is displayed in the 'print rack' must be pre-priced before bringing to the gallery. Thank you.

- **Carol Colby, Chair, Gift Case**
640-2410

VOLUNTEERS: Members.....please remember to help out in some way. It is a requirement of the Gallery. We especially need members to help out in the gallery when Christine is away. All that is required is to be able to make a sale. Shifts are 10am – 1:30pm and 1:30 – 5pm. Christine would be happy to give you a lesson on how to use the Debit Machine, which is a very easy procedure. Please contact:

- **Inge Hatton, Chair, Volunteers**
634-8692

HANGING COMMITTEE

To date, the hanging committee has hung six shows in the exhibition gallery. (The Members' Show in August was hung in both rooms of the gallery.) One show remains, that being the Earl Bailly Exhibition. Each show has been interesting to hang and has presented its own little challenges, but with all members of the hanging committee pitching in, everything is worked out! Time is always taken to be sure all pieces in the exhibit are hung so that each piece can be appreciated and also to ensure that each piece compliments those pieces hanging near it. Fifteen different people have helped hang the various shows this year. I appreciate everyone's help very

much! The hanging committee is a good way in which to make a contribution to the gallery ... there are no committee meetings to attend and you can help hang as often or as infrequently as you like. It involves approximately two hours or less on the Monday morning on which the new show goes up. Please consider checking off "Hanging Committee" on your Membership Form in 2012.

Thanks again to all those who have willingly helped this year

➤ **Melanie Cooke, Chair, Hanging Committee**
lag@eastlink.ca



GUESS WHO'S COMING TO DINNER?

On Saturday, September 17, Lunenburg Art Gallery is hosting this exciting event. It starts off with a **Gala Reception** at the Gallery at **5:30 pm**. All participants will be treated to delicious appetizers, and fabulous wine from our wine partner, **Luckett Vineyards**. Three fine paintings, donated by talented Gallery artists, **Paul Clarke, Ruth Flower** and **Sue Robinson**, will be won by lucky **Raffle** ticket holders! A "**Balloon Pop**" will make some noise, as there will be great prizes inside each one! For \$20 per balloon, you will win some wonderful prizes such as gift certificates to local restaurants, paintings by local artists, spa certificates, and much more.

Following this, you will find out who your mystery host is, and with directions to their home, will continue an unforgettable evening of scrumptious dining and good company.

Tickets for this special fundraising event are only \$55.00 and the Gallery thanks **Sheila Woodcock** and her tireless committee for producing this event.

RECENT ACHIEVEMENTS BY LAG MEMBERS

Our long time member, **Gill Osmond**, author, won First Place in the Budge Wilson Short Story Competition for the 34th Annual Writers' Federation of Nova Scotia - Atlantic Writing Competition. CONGRATULATIONS GILL!

LAG member **Peter Gough** has just won 1st and 2nd place in the 2011 American Art Award competition – Realism-Landscape category. CONGRATULATIONS, Peter!



Peter Gough 1st Place Realism-Landscape- INTO THE MIRROR- 36 "X70", acrylic on canvas



Peter Gough 2nd Place- Realism-Landscape- RISING SEA TRYPTICH 45"X180", acrylic on canvas

To see more of Peter's work, go to www.petergough.ca, and to see more of the winners of this huge international competition, go to www.AmericanArtAwards.com

COMING EVENT: September 27- October 30

An Earl Bailly Retrospective Show and Sale **BOLD STROKES- ADVENTURES IN PAINT**

Ann Hebb, Curator of the Gallery's Earl Bailly Collection, reports that many LAG members are realizing what an honour it is to have the Earl Bailly Collection housed in our Gallery and the Fisheries Museum- so do show your support by attending the opening on Sept. 27 and Ciel Duke's presentation September 28th at the Fisheries Museum.

This rare exhibition of Earl's work is from the collection of Suzanne and Ron Bailly, children of Earl's late brother Don. A native Lunenburg, Earl lived a happy, productive and prolific life as an

artist. Restricted by disabling polio as a child, he learned to paint with a brush clenched in his teeth. Local scenes of the sea, nature and fishing life were his favourite subjects. Earl was internationally renowned for his work and sailed to the Chicago World's Fair in 1933, aboard the original Bluenose! Lunenburg Art Gallery was founded as a result of the donation of his paintings to the Town and the Gallery. There is much to be proud of in the legacy of Earl Bailly. Be sure to attend the opening reception to hear Hank Middleton perform his song about Earl- "I Gotta Swing"!



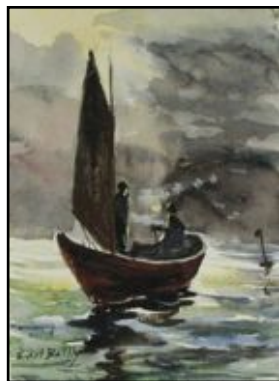
Peggy's Cove Gate- mid 1920's

There Is A Green Hill - Mid 1950's



After The Storm – 1960's

Dory At Dusk- watercolour



ATTIC ART AND COLLECTIBLE SALE-

**Saturday, November 5, 10am to 1 pm
Lunenburg Fire Hall**

Collection for this fundraising event will begin soon, so please check with Christine at the Gallery at 640-4044, or Gill Osmond at 634-9626.

HELEN OPIE AND LOUISE BAKER

Aug 30 to September 25

Explorations In Paint



Louise Baker- Lavender Fields- oil



Helen Opie- Lunenburg Waterfront from Hospital Hill

MEMBER'S GALLERY- SEPTEMBER



Patty Rhinelander-Market Bounty



Sue Robinson-Midnight Sail acrylic



Anne Cameron- Rose Bay



Robyn Sweet- Autumn Primaries Watercolour pencil